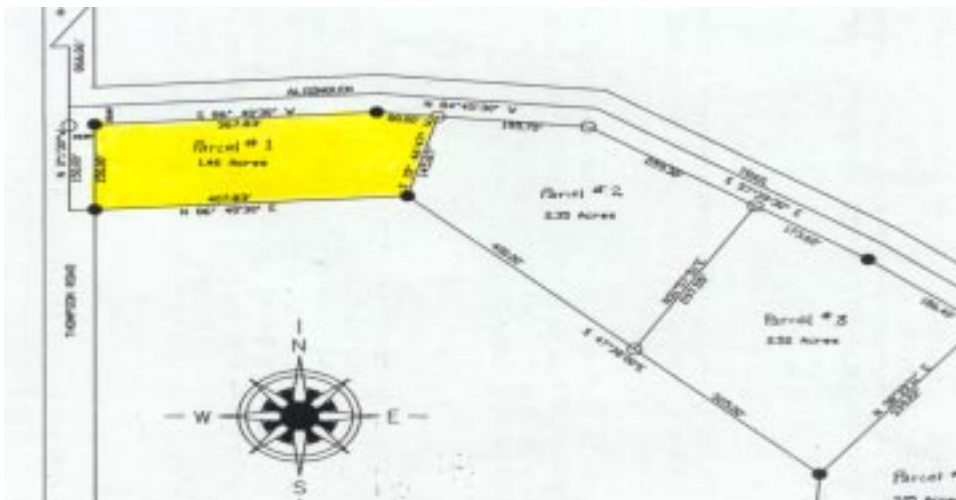


# Vacant Lot

*Off Thompson Road*



**Parcel # 1 \$ 8,900**

Wooded 425 x 147 +/-  
Nice Building site with a lot of road frontage.  
Frontage on two County Maintained Roads

Thompson Road  
Mio, Michigan 48647  
Big Creek Twp, Oscoda Cty  
T26N-R2E Sec 4  
Lat 44.671644 Long -84.16017

F-854

## **Directions**

Take M- 33 North of Mio, 2.5 Miles to Cherry Creek road, Turn Left ( West )  
continue west approx 2 miles to Thompson Road. Turn Left (South)  
Go aprox 3/4 mile to Corner of Thompson & Algonquin Trail.  
Property on Corner.



**State Wide Real Estate of Mio**

Corner of M-33 & M-72  
PO Box 395 Mio, Michigan 48647

**(989) 826-3292**

[www.statewidemio.com](http://www.statewidemio.com)

**Fax (989) 826-2108 Email [info@statewidemio.com](mailto:info@statewidemio.com)**