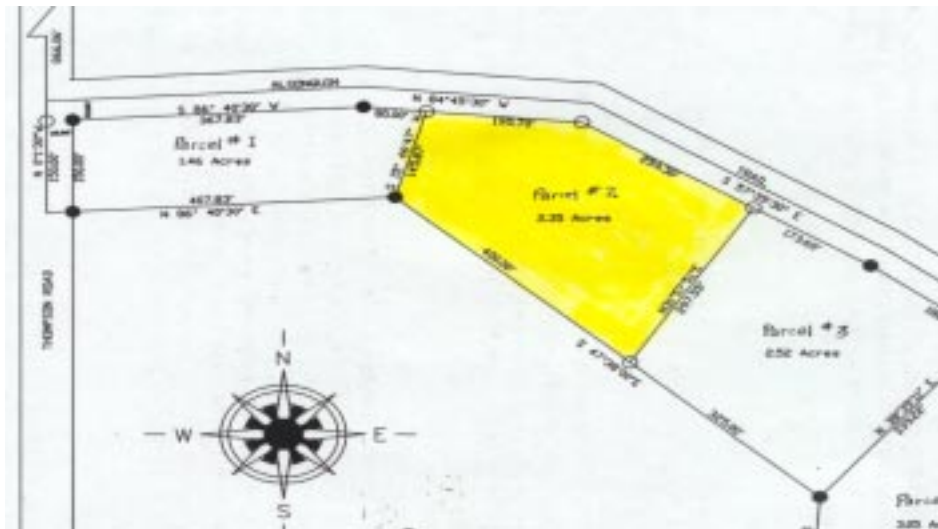


2.35 Acres

Off Algonquin Trail



Parcel # 2 \$ 8,900

Wooded, Irregular 370 x 225 +/-
Nice Building site with a lot of road frontage.
Frontage on a County Maintained Road

F-855

© 2002 Rockford Map Publ's., Inc.

Directions

Take M- 33 North of Mio, 2.5 Miles to Cherry Creek road, Turn Left (West)
continue west approx 2 miles to Thompson Road. Turn Left (South)
Go aprox 3/4 mile to Algonquin Trail, Turn Left (East)
Property on Right.



State Wide Real Estate of Mio

Corner of M-33 & M-72

PO Box 395 Mio, Michigan 48647

(989) 826-3292

www.statewidemio.com

Fax (989) 826-2108 Email info@statewidemio.com