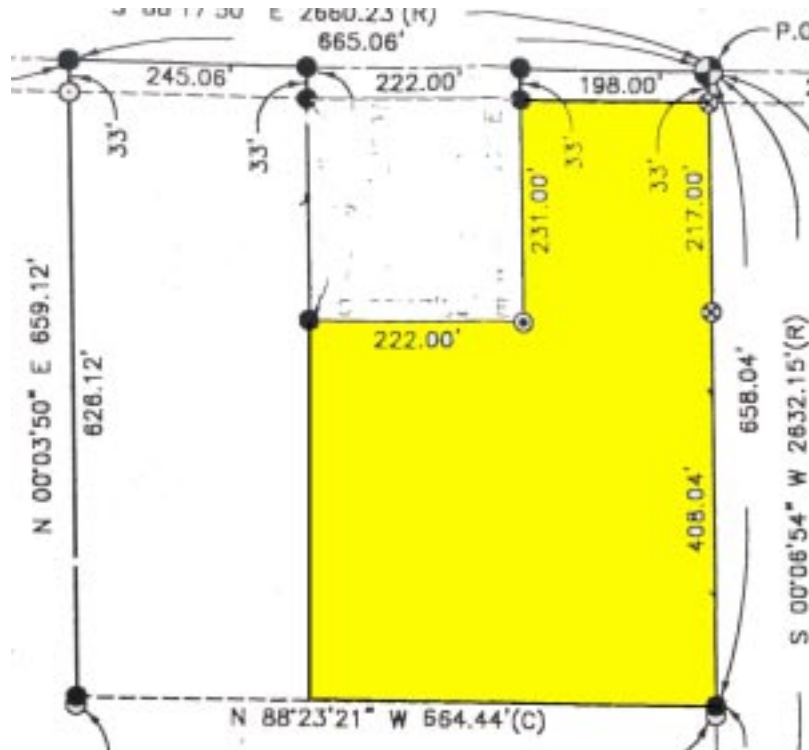


5.1 Acres

Kneeland Road



\$ 23,900

5 Acres mol
Wooded
Electric Available, County Road Frontage

Elmer Township
F-861

Kneeland Road
Mio, Michigan 48647
Elmer Twp, Oscoda Cty
T27N-R2E Sec 27
Lat 44.710116 Long -84.118055

Directions Take M- 33 North of Mio, 4 miles to
KNEeland Road Turn Left (west) on Kneeland Road
travel 3 1/2 mils property is on left



State Wide Real Estate of Mio
Corner of M-33 & M-72
PO Box 395 Mio, Michigan 48647

(989) 826-3292

www.statewidemio.com

Fax (989) 826-2108 Email info@statewidemio.com