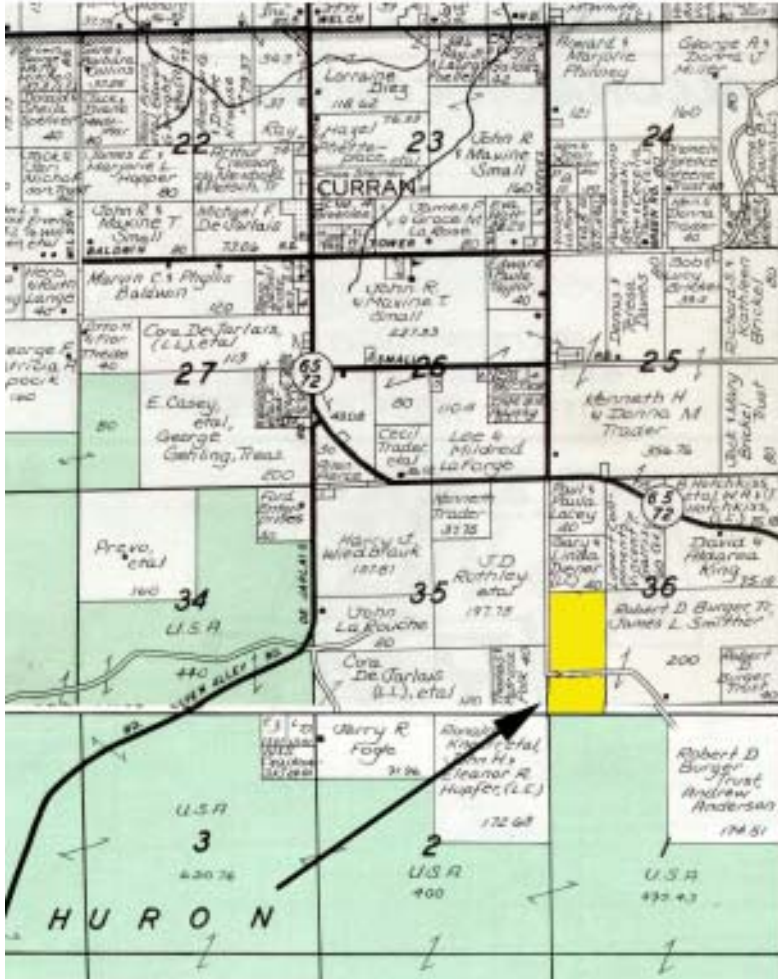


80 Acres

Reeves Road South, Curran



Reeves Trail
Curran, Michigan 48728
Mitchell Township, Alcona County
T27N-R5E Sec 36
The W 1/2 of SW 1/4

**80 Acres Wooded
Has Trails and areas
for Food Plots,
electric 1/4 mile away
Rolling
Borders Federal Land**

*Seller will Divide
into 40's - 20's -
10's*

F-910

\$ 139,900

Directions Take M-M-72 East From Fairview, Travel to the Intersection of M-65 in Curran, Turn right (south) 2 1/2 Miles to Reeves Road turn south on trail road, travel 1/2 mile, property on left (east side)



State Wide Real Estate of Mio

Corner of M-33 & M-72

PO Box 395 Mio, Michigan 48647

(989) 826-3292

www.statewidemio.com

Fax (989) 826-2108 Email info@statewidemio.com