

8 Acres

1100 Gerber Road

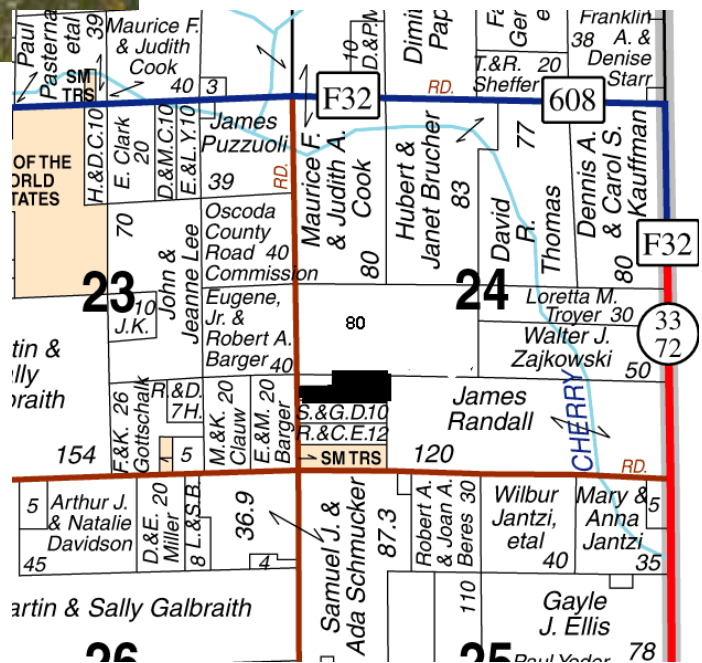


**8 Acres Partially Wooded
Pole Barn 24 x 32**

Mio, Michigan 48728
Elmer Township, Oscoda County
T27N-R2E Sec 24

F-911

\$ 35,000



Directions Take M33 North of Mio 4 Miles to Kneeland Rd, turn left (west), continue 1 mile to Gerber rd, turn right (north), travel 1/4 mile building on right



State Wide Real Estate of Mio

Corner of M-33 & M-72

PO Box 395 Mio, Michigan 48647

(989) 826-3292

www.statewidemio.com

Fax (989) 826-2108 Email info@statewidemio.com