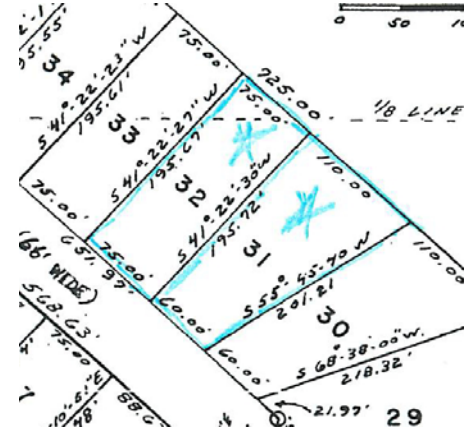


2 Wooded Lots

Deeded Access to Mio Pond

Ready to camp on



\$ 8,000



Deeded access to Mio Pond

Big Creek Township
Oscoda County
T26N-R2E Sec 2
Harborview Sub Lots 31 & 32
Mio, Michigan 48647
674 Harborview

Storage Shed
Cleared spot for Camper
Gated Driveway
Electric Available

Directions:

From Mio take M-33 North 2 Miles to Cherry Creek Rd, turn left (west), travel 1 1/2 miles to Thompson rd turn left (south) travel 3/4 of amile to



G-857

State Wide Real Estate of Mio
Corner of M-33 & M-72
PO Box 395 Mio, Michigan 48647

(989) 826-3292

www.statewidemio.com

Fax (989) 826-2108 Email info@statewidemio.com